



**Unitec Sierra Server
IP Address**

Tech Guide

WASHLINK SYSTEMS Sierra Server IP Address

This document provides comprehensive information for finding Sierra Server IP Address.

This will show how to find the IP address of the Sierra Server and how to change the desktop shortcut to go to the correct IP address and log onto the Sierra Server.

When emailing or calling for assistance, you must have the following information available:

Location Name: _____

Contact Person: _____

Contact Phone: _____

Distributor Name: _____

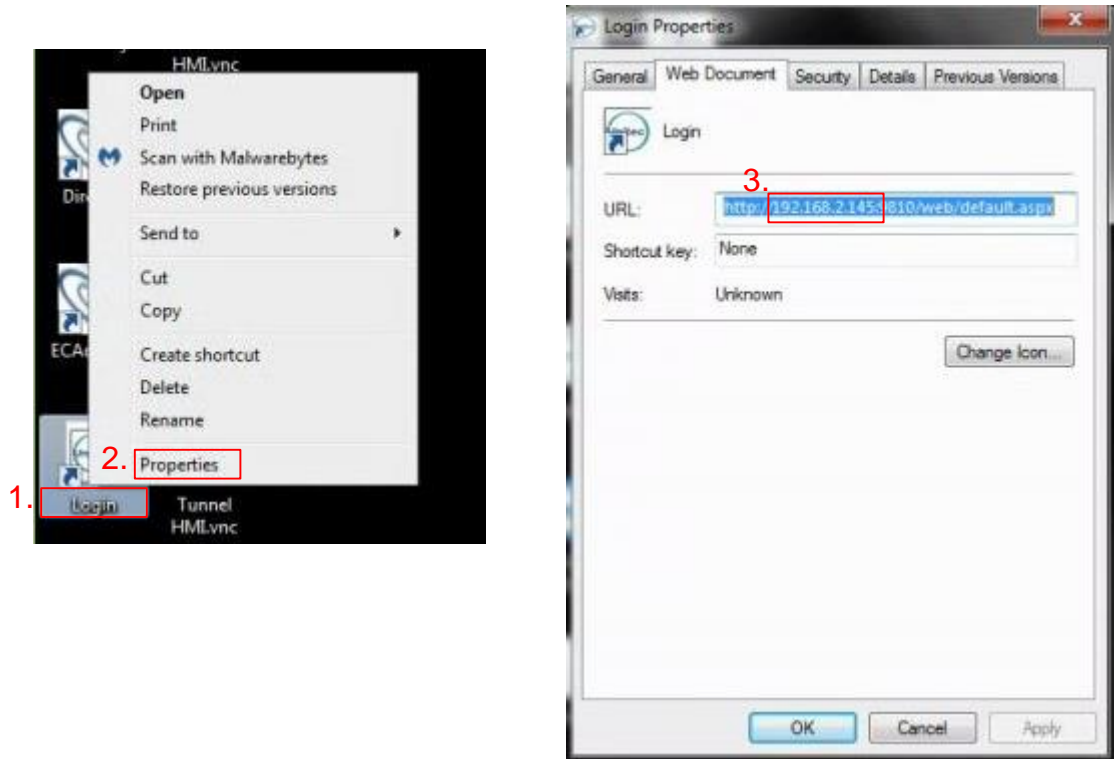
Note:

This guide uses the third party application AngryIP v3.6.0 available for free download online.
<https://angryip.org/download/#windows>
However the techniques demonstrated within will generally apply to any IP scanning utility.

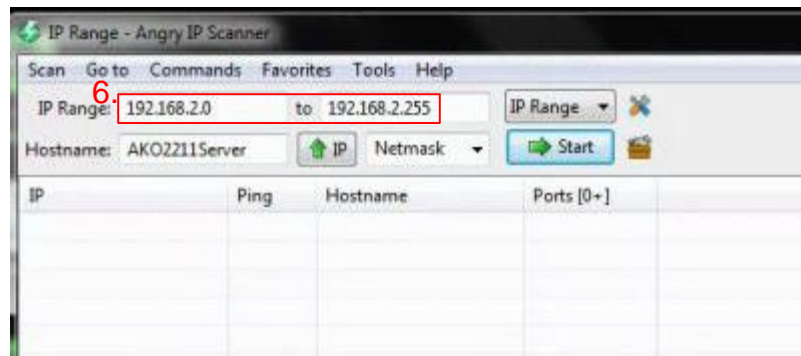
COPYRIGHT

2019 Washlink Systems. All rights reserved.

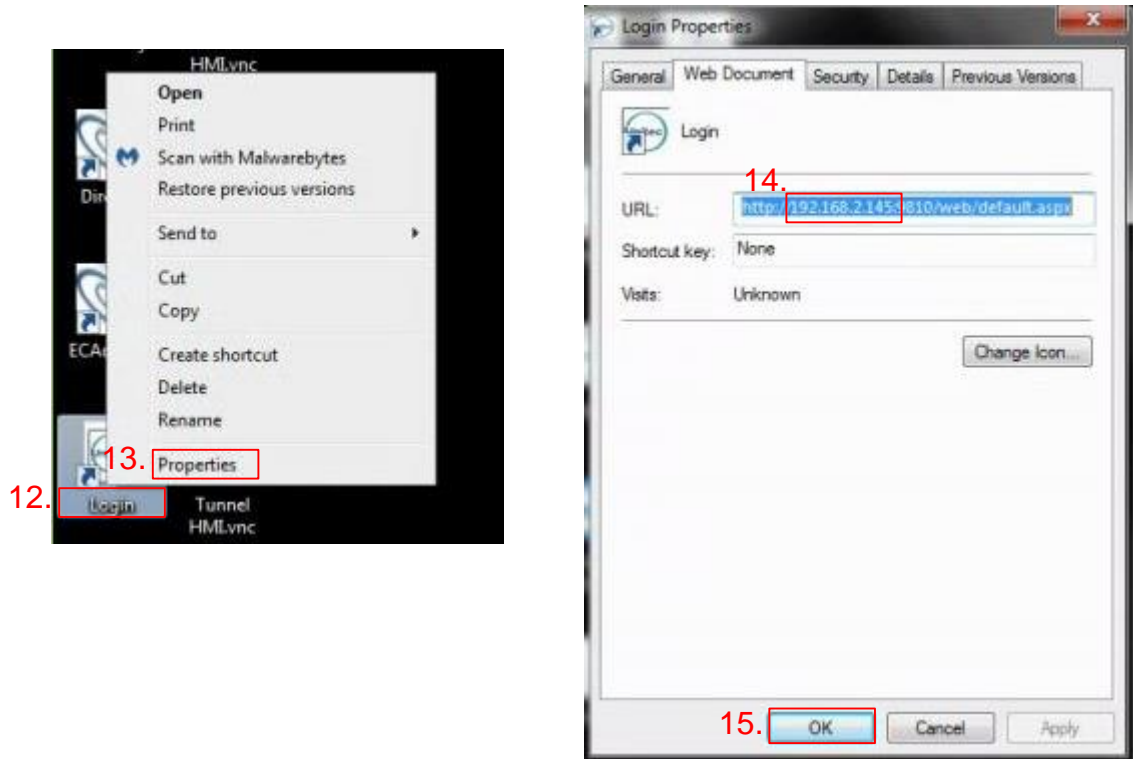
THIS DOCUMENT IS THE EXCLUSIVE PROPERTY OF WASHLINK SYSTEMS AND IS PREPARED ONLY FOR USE BY THE COMPANY PURCHASING THE EQUIPMENT. EDITING, COPYING, DISTRIBUTING, AND/OR SELLING THIS DOCUMENT IS STRICTLY PROHIBITED WITHOUT PRIOR WRITTEN CONSENT FROM WASHLINK SYSTEMS. WASHLINK SYSTEMS RESERVES THE RIGHT TO EDIT THIS DOCUMENT IN ANY MANNER DEEMED NECESSARY, AT ANY TIME, AND WITHOUT PRIOR NOTICE.



1. From the desktop, right click the Unitec Sierra Server shortcut.
2. Left click Properties.
3. See what the current IP address is (typically 192.168.2.xxx) this will be needed to find the current IP address of the Sierra Server.



4. Left click the Windows start icon.
5. Select the Angry IP Scanner icon (note: may be in Washlink Folder).
6. Enter the IP Range in the two boxes based on what network the Sierra Server is on from step 3.
Changing the xxx to 0 in the first box and 255 in the second box
(i.e. from 192.168.2.0 to 192.168.2.255)



12. From the desktop, right click the Unitec Sierra Server shortcut.
13. Left click Properties.
14. Now change the IP address to what was discovered in step 11.
15. Press OK and now the shortcut should bring you to the log on page for Sierra Server