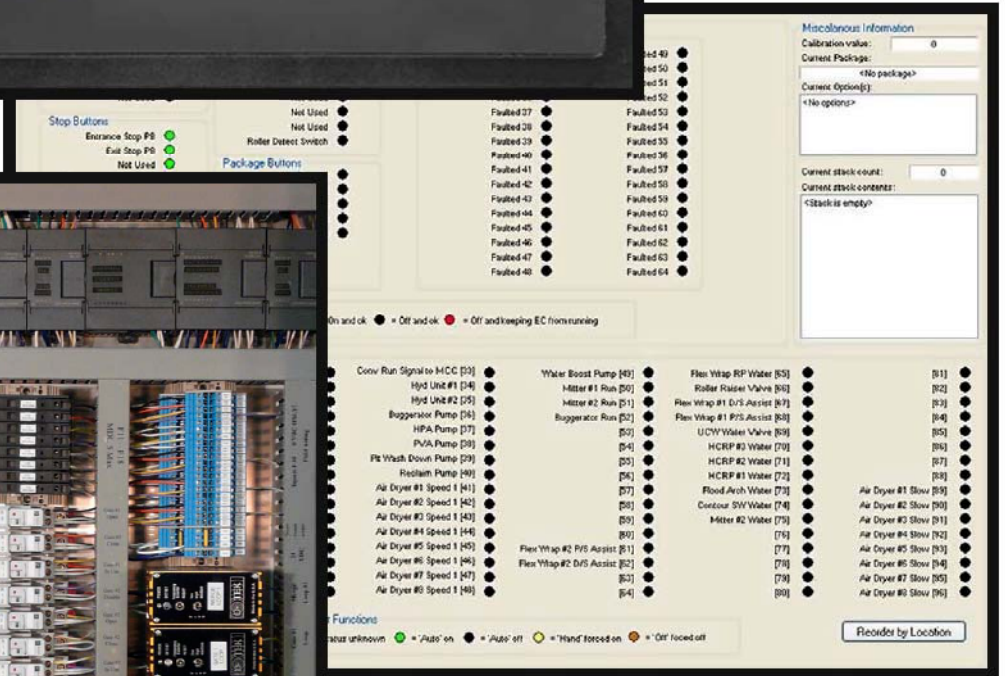
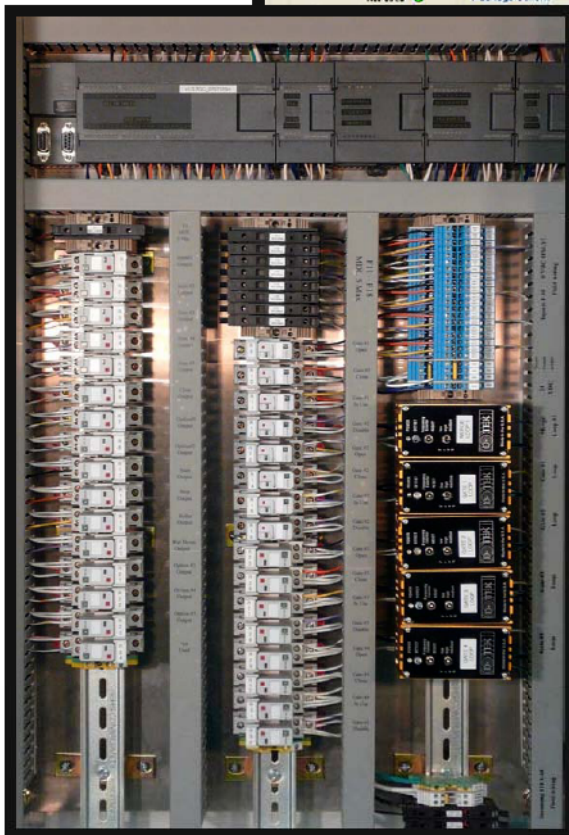


traditional EQUIPMENT CONTROLLER

COMPLETE CONTROL



traditional EQUIPMENT CONTROLLER

FEATURES & BENEFITS

- from 16 to 96 functions per enclosure with unlimited expansion does not rely on a PC
- optional washlink windows based director™ interface
- adjust “on the fly” (no shutting down car wash for adjustments)
- built in warning horn, conveyor and fork controls
- built in collision avoidance controls
- built in tire functionality, front, rear or both on all functions
- built in look back to save on energy and equipment life
- built in wet down, with daily enabled schedule
- all functions individually fused with blown fuse indicators
- industry proven components from siemens worldwide
- controls all brands of car wash equipment
- simulated pulse and conveyor auto off features
- hours and days of operation control for added security
- hand-auto switches for easy testing
- double pole 15amp relays for long life
- oversized wire ways for easy installation
- corrosion and rust proof enclosure with built in key lock
- seamless integration with the washlink family of controls
- ul listed

TECHNICAL DATA

Specifications

110-240vac - 50/60hz – 90watts

Dimensions

up to 32 functions 33”x25”x12” (83x63x30cm)

up to 64 functions 41”x33”x12” (104x83x30cm)

up to 96 functions 49”x39”x12” (124x99x30cm)

Shipping Weight

40+ lbs. (18.1+kg)

