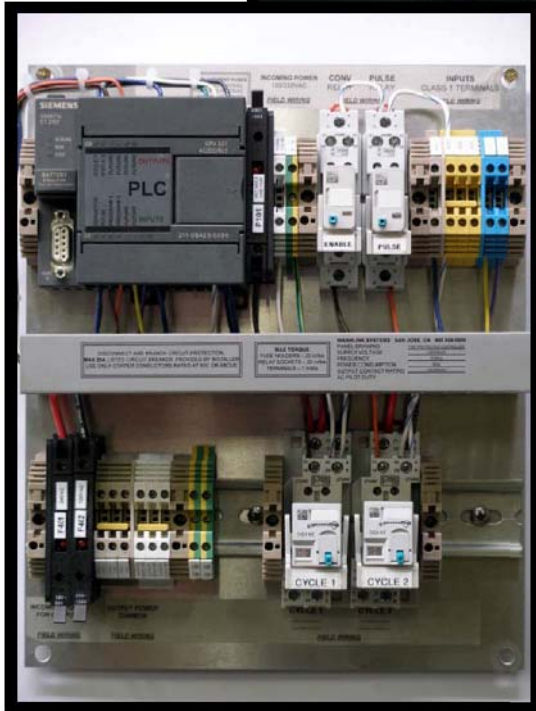


tire protectant

CONTROLLER



SAVE MONEY

washlink
SYSTEMS

tire protectant CONTROLLER

FEATURES & BENEFITS

- saves money by automatically adjusting chemical application based on volume
- two separate cycles allowing maximum flexibility
 - double tunnel
 - hot and cold weather
 - passenger and drivers side
- each cycle has 40 ranges for maximum chemical savings
- increases consistency & quality of application reducing
 - over application of chemical during busy times
 - under application of chemical during slower times
- add to any brand of online tire protectant applicator
- integrates with any brand equipment controller on the market
- proven industrial PLC from siemens energy and automation
- hand-auto switches for easy testing
- double pole 15 amp relays for long life
- prewired & fused with blown fuse indicator
- adjust “on the fly” (no shutting down car wash for system changes)
- built in counters for each function
- corrosion and rust proof enclosure with lockable hasps
- ul listed

TECHNICAL DATA

Specifications

110-240vac - 50/60hz – 90watts

Dimensions

13”x12”x6” (33x30x15cm)

Shipping Weight

25 lbs. (11.3kg)

