



Gmail App Password Setup

Tech Guide

WASHLINK SYSTEMS

Gmail App Password Setup

This document provides comprehensive information for Gmail App Password Setup.

What is the purpose of this equipment.

When emailing or calling for assistance, you must have the following information available:

Location Name: _____

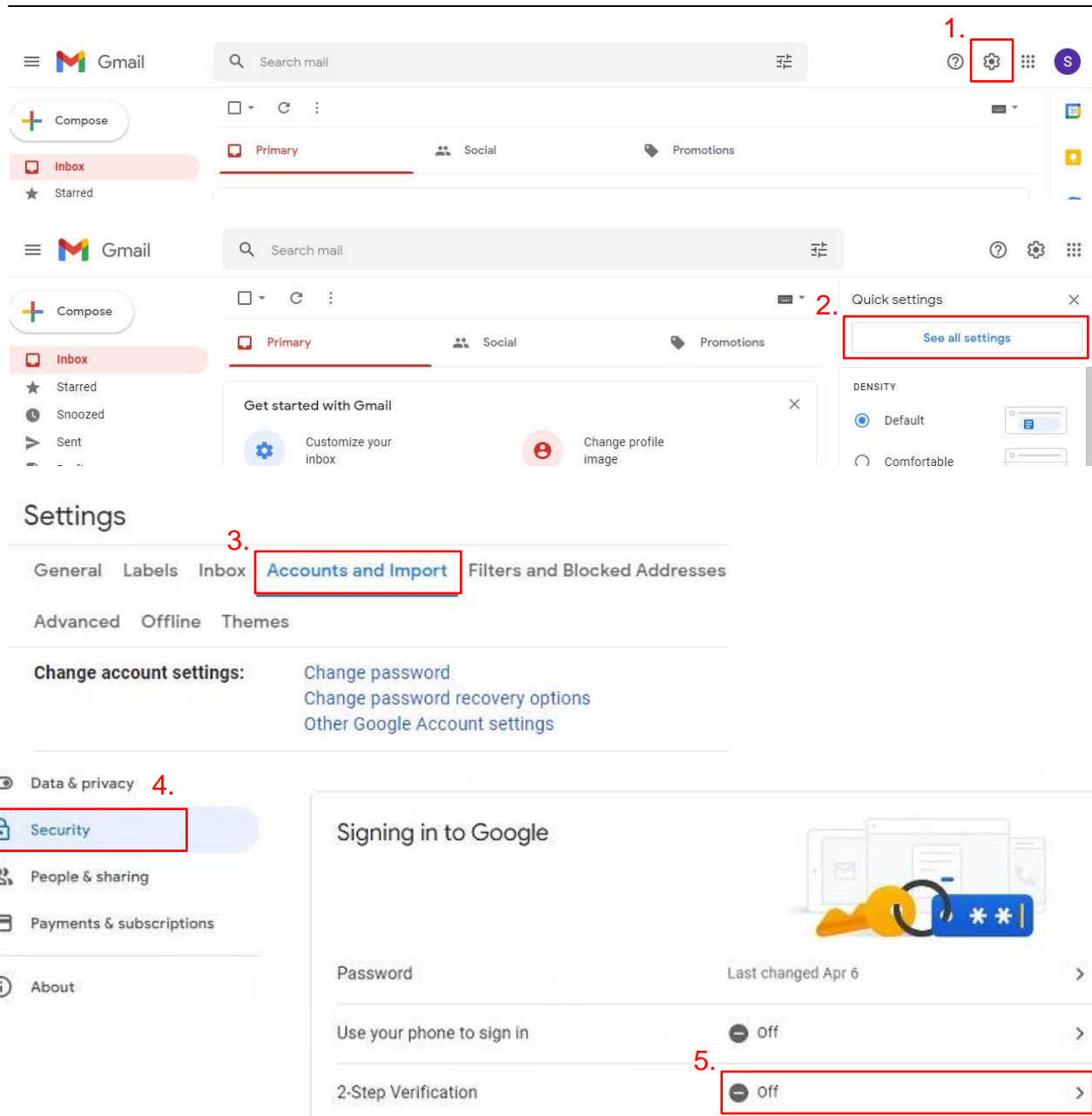
Contact Person: _____

Contact Phone: _____

Distributor Name: _____

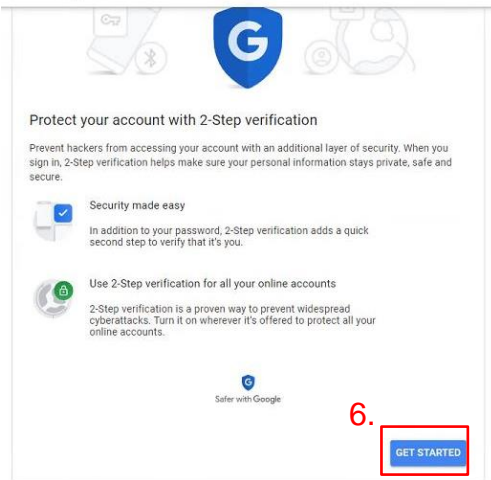
COPYRIGHT

**2022 Washlink Systems. All rights reserved.
THIS DOCUMENT IS THE EXCLUSIVE PROPERTY OF WASHLINK SYSTEMS AND IS PREPARED ONLY FOR USE BY THE COMPANY PURCHASING THE EQUIPMENT. EDITING, COPYING, DISTRIBUTING, AND/OR SELLING THIS DOCUMENT IS STRICTLY PROHIBITED WITHOUT PRIOR WRITTEN CONSENT FROM WASHLINK SYSTEMS. WASHLINK SYSTEMS RESERVES THE RIGHT TO EDIT THIS DOCUMENT IN ANY MANNER DEEMED NECESSARY, AT ANY TIME, AND WITHOUT PRIOR NOTICE.**

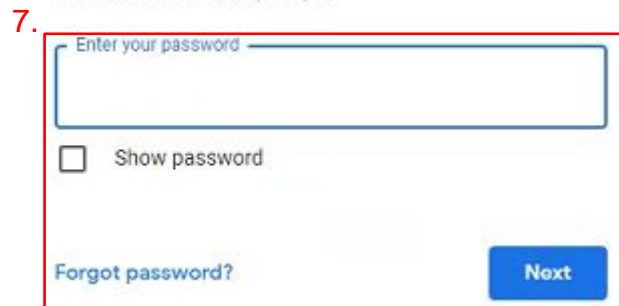


1. From your Gmail account, press the Settings button.
2. Press See all settings.
3. Select the Accounts and Import tab.
4. Select Security.
5. If 2-Step Verification is off, press the > to set it up.
If it is on, skip to step 10.

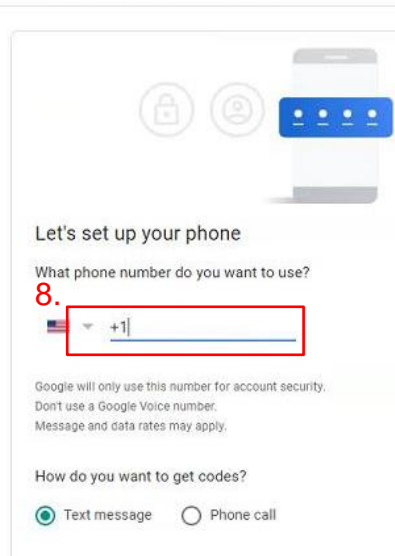
← 2-Step Verification



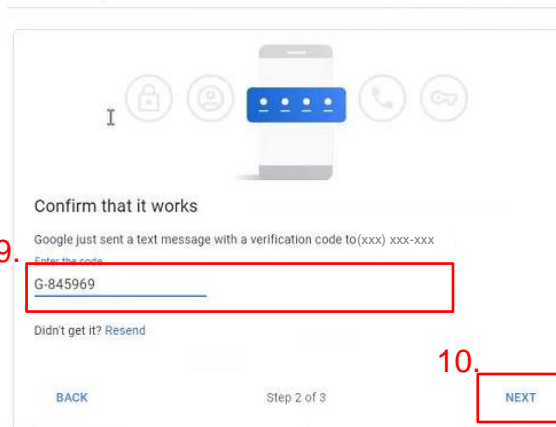
To continue, first verify it's you



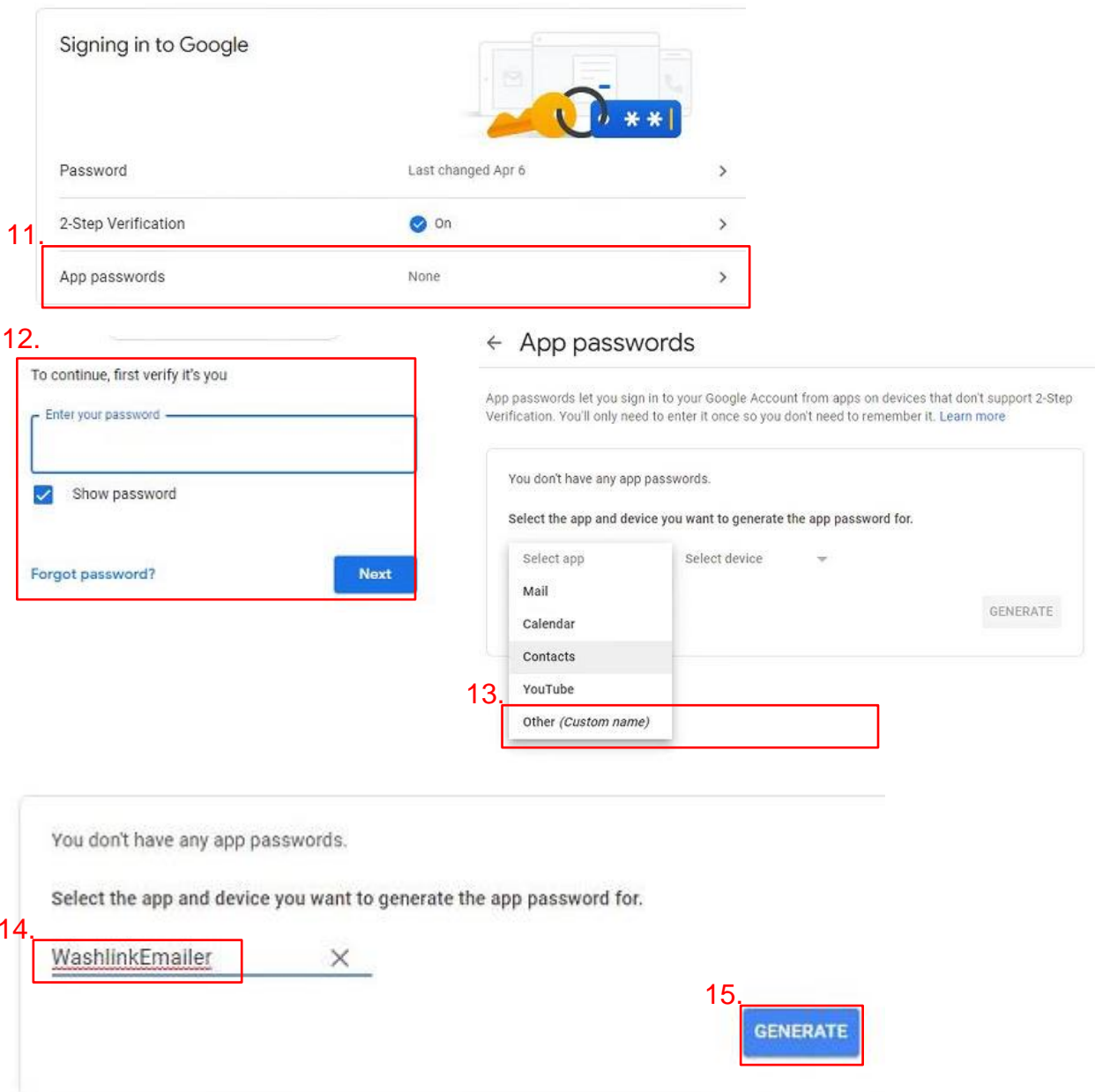
← 2-Step Verification



← 2-Step Verification



6. Press the Get Started.
7. Enter your email password and press Next.
8. Enter you phone number to get text conformation.
9. Enter the conformation code that was texted to you.
10. Press Next.



11. Under App passwords, press the >.
12. Enter your Gmail password and press Next.
13. Under Select app, choose Other (Custom name).
14. Enter a unique name.
15. Press GENERATE.

Generated app password

Your app password for your device

16. **mjqw giek ohyf qcsp**

How to use it

Go to the settings for your Google Account in the application or device you are trying to set up. Replace your password with the 16-character password shown above. Just like your normal password, this app password grants complete access to your Google Account. You won't need to remember it, so don't write it down or share it with anyone.

17. **DONE**

18. **File**

19. **193**

20. **Outgoing email server settings...**

21. **21**

22. **22.**

23. **23.**

The image shows a sequence of steps for configuring email in the Detective application. Step 18 shows the 'File' menu being opened. Step 19 points to the 'Emailer' option. Step 20 shows the 'Outgoing email server settings...' dialog box. Step 21 points to the 'Password' field where the app password is entered. Step 22 points to the 'Send Test Email' button. Step 23 points to the 'Save' button.

16. Copy password generated.
17. Press DONE.
18. In the Detective App, left click File.
19. Left Click Emailer.
20. Left click Outgoing email server settings...
21. Enter the Generated app password in Detective Email Server Configuration.
22. Send yourself a Test Email.
23. After you have received the test email, press Save.