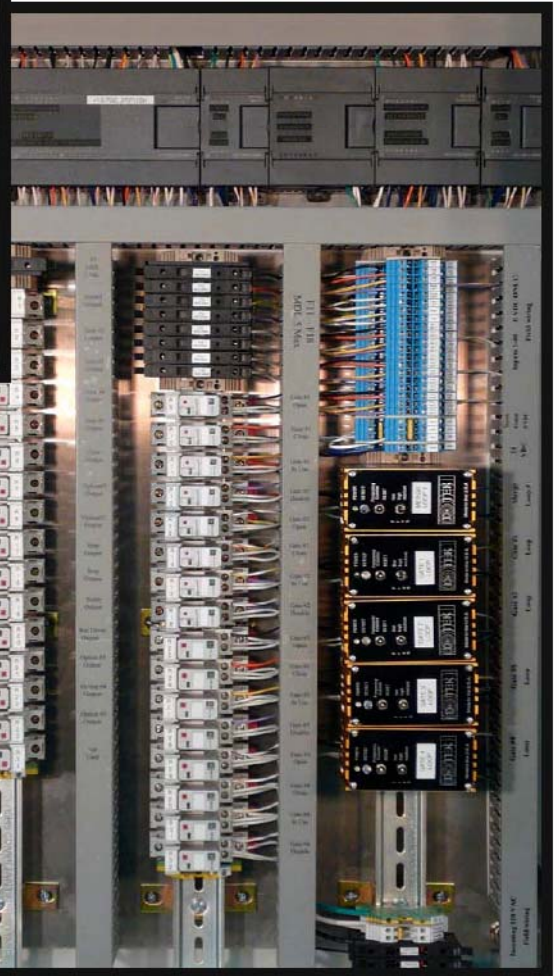
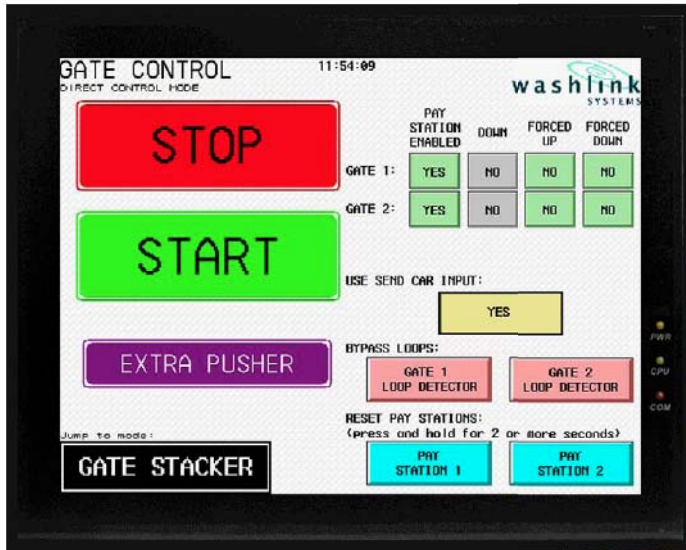


# gate management CONTROLLER



SIDEBAR

# gate management CONTROLLER

## FEATURES & BENEFITS

- control up to 8 pay stations and gates
- integrate with all brands of gates, pay stations, and equip controllers
- industry proven components from siemens energy and automation
- corrosion and rust proof enclosure with built in key lock
- full featured user interface for easy setup and operation
  - multi level password to maximize control
  - remote gate and pay station control
  - real time system status and control
  - built in 'override' screen if pay station fails
  - adjust 'on the fly' – no need to stop car wash for adjustments
  - 'start', 'stop', 'extra pusher', and 'wet down' buttons
- fused controls and blown fuse indicators for easy troubleshooting
- isolation relays on all controls to maximize protection
- oversized wire ways for easy installation
- pre-wired for most common installations
- seamless integration with the washlink family of controls
- optional enter systems, pulse systems, entry touch screen consoles
- ul listed

## TECHNICAL DATA

### Specifications

110-240vac - 50/60hz – 90watts

### Dimensions

33"x25"x12" (83x63x30cm)

### Shipping Weight

40 lbs. (18.1kg)

